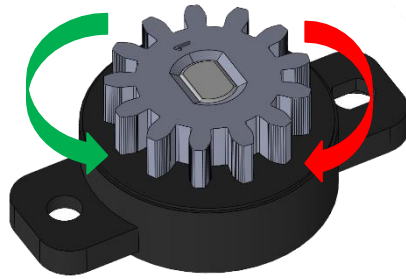
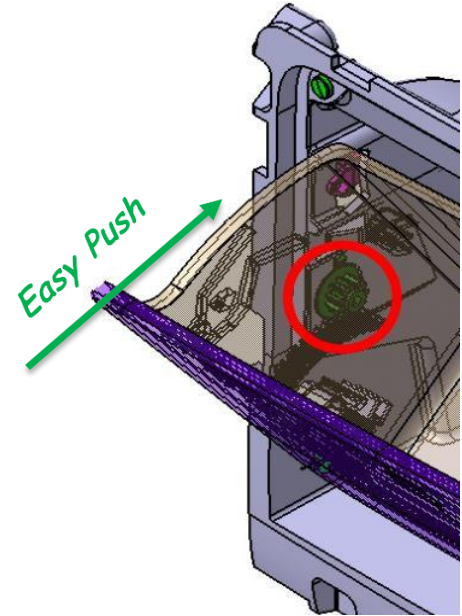


Free spinning direction



Damping direction
(R version)



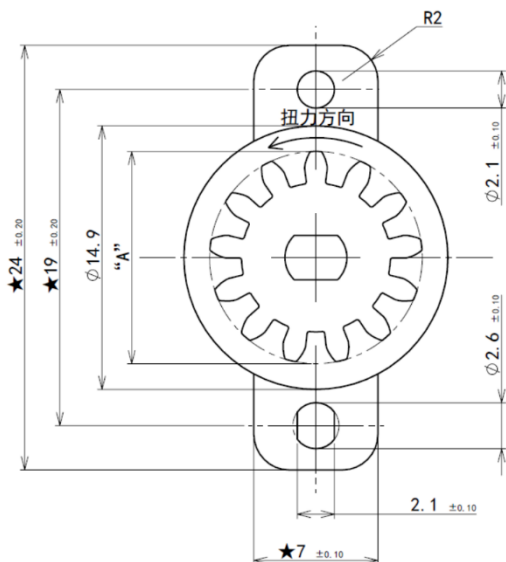
Custom designs are also available based on Customer requests

- Diameter of 14.9mm
- Torque up to 4,00 Ncm at 20 rpm
- Free Spinning in non-damping direction
- Functions in any orientation
- Very limited engagement angle for dampening.
- Up to 20.000 cycles @200rpm and RT

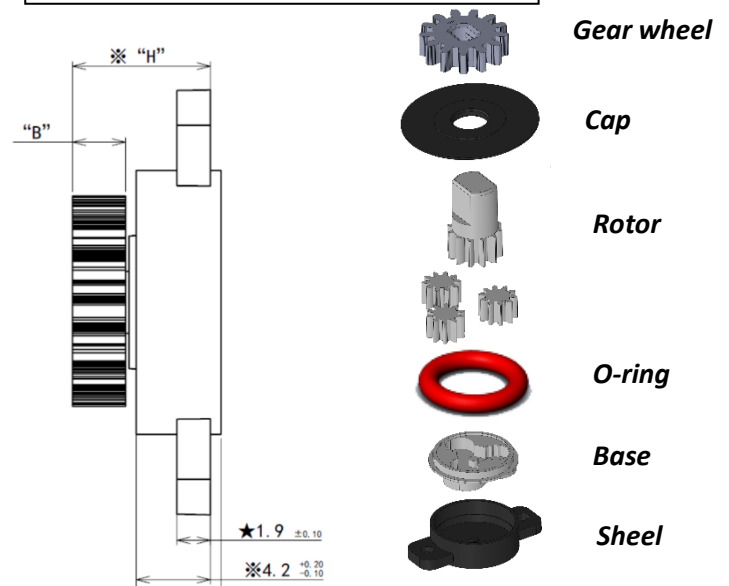
All products are 100% tested for torque.

Bases, gear, wheels, torques and colors can be interchanged for design flexibility.

Patent Product



Overall dimensions



Product Key




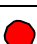

Type
C: classic (free rotating)

Fixing
B: holes thick body

D01 023 01 100 R

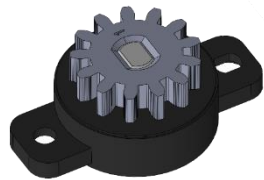
Gear Wheel
01: 11 teeth – lower ISO- module 0,8 – 3 mm height
02: 16 teeth - module 0,8-4,5 mm height
03: 13 teeth - module 0,8 – 3 mm height – 14,5° pressure angle
04: 11 teeth - module 0,8-4,5 mm height
05: 16 teeth - module 0,8 – 3 mm height
06: 10 teeth - module 0,8 – 3,5 mm height

Torque id. (•)
100 = 1±0,3 Ncm
150 = 1,5±0,45 Ncm
200 = 2±0,6 Ncm
300 = 3±0,9 Ncm
400 = 4±1,2 Ncm

Color
Green 
Black 
White 
Red 
Pink 

Free run	Rotor
R= freerun right (free clockwise)	Black

(•) = Torque 100% checked in production at 20 rpm and RT



*The official 2D drawing is the only valid technical documentation.
All the characteristics and dimensions written into this datasheet may in fact change and so will not be valid anymore.*